

Welcome to the #SPorgWebinar

What is the role of a humanitarian donor in linking with social protection systems?



European Union
Civil Protection and
Humanitarian Aid



What is the role of a humanitarian donor in linking with social protection systems?



Speakers



Marlies Lensink
Regional Thematic Expert
Food/DP/Cash, ECHO
Regional Office Nairobi



Quentin Le Gallo
Regional Thematic Expert -
Food Security, Cash Transfers
& Basic Needs in the MENA
region, DG ECHO



Javier Rio-Navarro
Head of Office, DG
ECHO Somalia

Moderator



Sigrid Kühlke
Thematic expert safety
nets/cash, DG ECHO

Share your questions to the speakers!

✈ type them in the **Q&A** box

Please state your name/organisation, and if your question is directed to a specific speaker.

🐦 Also, feel free to share your impressions on Twitter using **#SPorgWebinar**



What is the role of a humanitarian donor in linking with social protection systems? Example of DG ECHO

DG ECHO-led webinar
hosted by socialprotection.org, 8 Sept. 2022



DG ECHO Thematic Policy Document No 3 Cash Transfers

Directorate-General for
European Civil Protection and
Humanitarian Aid Operations

March 2022

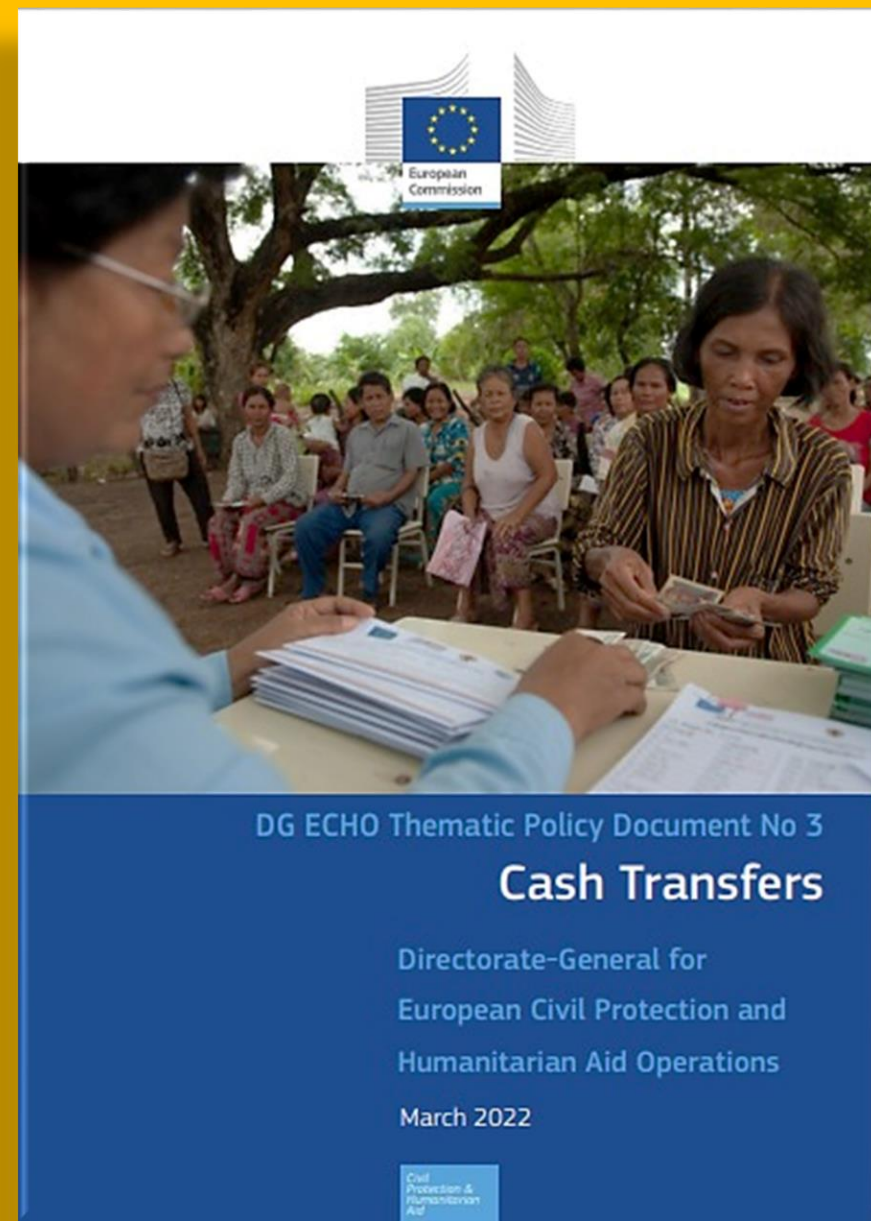
Agenda

- **15 min.** Introduction and presentation on ECHO's cash
- **30 min.** Presentations of country examples by panelists: Ukraine, Mozambique, Somalia
 - What are our investments as humanitarian donor to ensure urgent survival needs are adequately covered during an acute crisis, notably in collaboration with dev' actors? What are the red lines?
 - What do we do to prepare for future crises?
- **15 min.** Follow-up reflections & questions to panelists
 - Results achieved so far (successes, challenges) and recommendations
- **30 min.** Q&A with audience
- **3 min.** Key take-aways from panelists

DG ECHO Thematic Policy Document No 3 Cash Transfers:

Topic 1.2.

Linking humanitarian cash with social protection systems,
including shock-responsiveness



Overview of outcomes

Operationalises the H-P-D Nexus

- 1.1 Sequencing projects
- 1.2 Linking humanitarian cash with social protection systems, including shock-responsiveness

Targets the most vulnerable

- 2.1 Risk-informed approach
- 2.2 Assessments/ response analysis/ modality selection
- 2.3 Safe inclusion of the most vulnerable

Adequate, equitable and timely

- 3.1 Enhancing sector outcomes through a Basic Needs Approach
- 3.2 Adequate and equitable transfers
- 3.3 Preparedness

Provides value for money

- 4.1 Harmonised cash operations
- 4.2 Operational models
- 4.3 Digitalisation and data protection
- 4.4 Interoperability of databases and registries
- 4.5 Measuring cost-efficiency and effectiveness

Accountable

- 5.1 Accountability
- 5.2 Group cash transfers
- 5.3 Financial risk and compliance

Measurable

- 6.1 Tracking cash and vouchers
- 6.2 Common MEAL frameworks
- 6.3 Third party monitoring and independent MEAL
- 6.4 Market monitoring (including of inflation, currency depreciation and exchange rates)

Topic 1.2. Linking humanitarian cash with social protection systems, including shock-responsiveness

Operationalises the
H-P-D Nexus

1.1 Sequencing projects

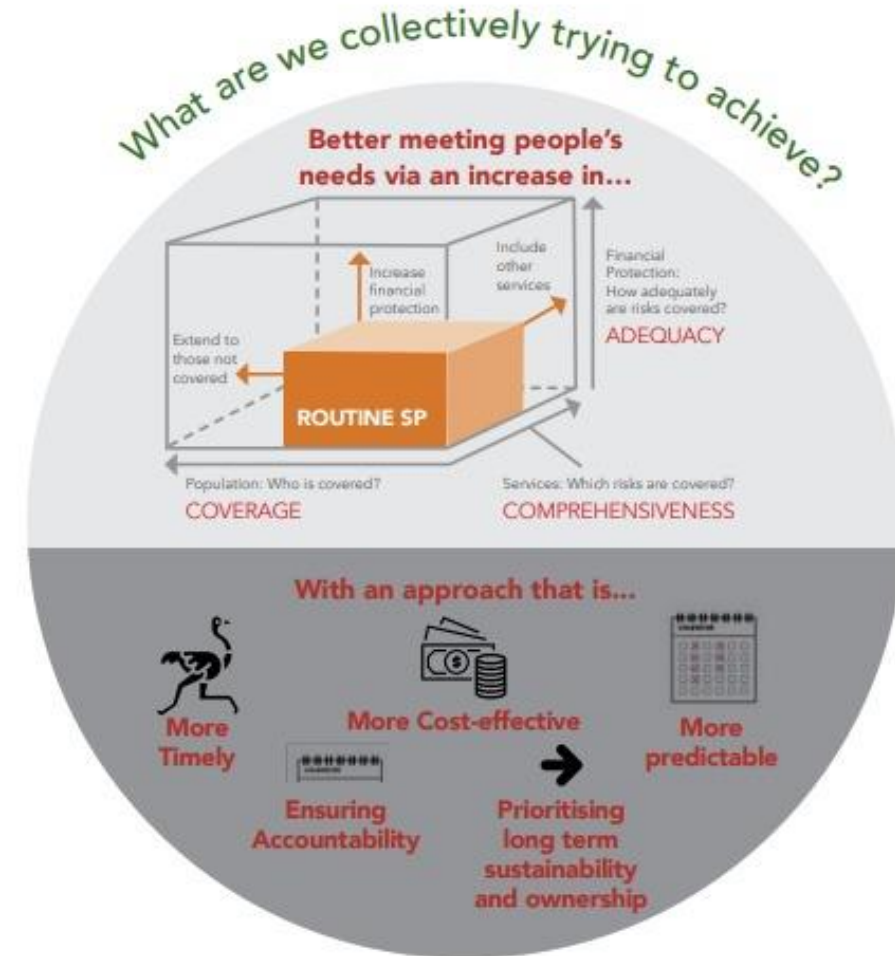
1.2 Linking humanitarian cash with social protection systems, including shock-responsiveness

Why?

- Strengthen resilience/reduce impact of shocks
- Facilitate scaling up of systems

How?

- Pilot design and operational features to facilitate the transition of the programme or caseload into an SP system
- Link with existing SP systems at different points in the delivery chain
- Contribute to the adaptation of shock-responsive SP systems and programmes



Mainstreaming cash/SP linkages in the policy

Box 3. Targeting in Shock-Responsive Social Protection

Humanitarian assistance and social protection have different but, in some instances, overlapping objectives, and in turn may have **different approaches to targeting**. SRSP involves adjustments to targeting to better meet humanitarian needs. This can take the form of design tweaks depending on the shock type and response objective, vertical expansion (i.e. providing a top-up to existing beneficiaries) or horizontal expansion, where by additional beneficiaries who have been affected by a shock may be targeted for assistance for a time-bound period. In the latter case, humanitarian targeting criteria could be applied, aligned with those being used for other humanitarian operations. In some cases, households may be pre-identified for a horizontal scale-up.

⁴Table 1. Beneficiary selection: advantages and risks across the humanitarian-development nexus (for each type of shock response) in [SPaN operational note No 2](#) (p. 7)

- **Box 2.** Humanitarian cash linkages to social protection systems – rationale and policy framework
- **Box 3. Targeting** in Shock-Responsive Social Protection
- **Box 4. Transfer values** and linkages to social protection
- **Box 6. Preparedness** for linking humanitarian cash and social protection systems
- **Box 7.** Humanitarian cash **databases** and single **registries** for social protection

Panel discussion on country examples:

Ukraine, Mozambique, Somalia

1. What are our investments as hum'n donor to ensure *urgent survival needs* are adequately covered during the peak of a crisis
- in collaboration with others, notably with dev' actors?

What are the red lines?

2. What can we do to prepare for *future* crises?

3. Results achieved so far (successes, challenges), future plans and recommendations

Q&A



Thank you!

References

DG ECHO specific documents:

- DG ECHO 2022 [*Thematic Policy on Cash Transfers*](#).
- DG ECHO 2021 [*Guidance Note on Disaster Preparedness*](#) with sections on SRSP and cash preparedness
- DG ECHO 2018 booklet [*Social Protection –Delivering on Humanitarian Emergencies and Crises*](#).

EU joint *Social Protection across the Humanitarian-Development Nexus* (SPaN) initiative related links (on socialprotection.org and EU capacity4dev):

- Socialprotection.org Online Community Social Protection in Crises Contexts **SPaN webpage** - <https://socialprotection.org/connect/communities/social-protection-crisis-contexts/european-commission-span-guidance-package>
- European Commission – **SPaN e-Learning Course** - <https://socialprotection.org/connect/communities/social-protection-crisis-contexts/european-commission-span-e-learning-course>
- 2019 **Tools and Methods Series Reference Document No. 26**: Social Protection across the Humanitarian-Development Nexus. A Game Changer in Supporting People through Crises - <https://socialprotection.org/discover/publications/reference-document-no-26-social-protection-across-humanitarian-development> and on <https://europa.eu/capacity4dev/sp-nexus/wiki/guidance-package-span-resources>
- 2019 Reference Document No. 26 on Social Protection across the Humanitarian-Development Nexus: **Supplementary Volume of Operational Notes** - <https://socialprotection.org/discover/publications/reference-document-no-26-social-protection-across-humanitarian-development> and on <https://europa.eu/capacity4dev/sp-nexus/wiki/guidance-package-span-resources>



+ click here or scan the QR code to become a member of



socialprotection.org



Thank you for joining!

Make sure to answer our survey, available after this session, and join us for the next webinars!

What is the role of a humanitarian donor in linking with social protection systems?